

NERC CCC ERO Alignment Working Group (AWG) Scope

Purpose

The North American Electric Reliability Corporation (NERC) Compliance and Certification Committee (CCC) has a role in implementing the Process for Evaluating Alignment of Electric Reliability Organization (ERO) Enterprise Programs and Tools. The NERC CCC ERO Alignment Working Group (AWG) will execute the CCC role within the process to address potential concerns with consistent implementation of the Compliance Monitoring and Enforcement Program (CMEP) and Organization Registration and Certification Program (ORCP).

Roles and Activities

The *Process Flow for Evaluating Alignment of ERO Enterprise Programs* (Attachment 1) identifies the CCC role, which includes: aiding in the screening of information, supporting further investigation of a potential concern, as requested by NERC, and providing suggested resolutions.

The CCC delegates its role and responsibilities to the AWG in an effort to more effectively and efficiently carry out activities. The AWG reports its work and deliverables to the CCC, and the CCC maintains ultimate responsibility for decision making and providing recommendations to NERC.

The AWG follows these steps to research and frame the possible alignment issue and provide suggested resolutions to NERC:

1. Gather information on the requested alignment issue
 - a. Identify support needs and use CCC subcommittees or individual members that have the expertise to review the issue
 - b. Perform analytical and qualitative review of the issue
 - c. Poll or survey, if needed, sources inside and outside the CCC (e.g., other NERC technical committees) to collect input on issue for possible resolution
2. Evaluate alignment issue
 - a. Determine the nature and extent of the issue and determine whether it is a systemic issue. For example, determine whether the issue is regional, limited to a segment, or limited to a particular program area.
 - b. Identify possible risk to the success of the CMEP and ORCP, and whether the issue poses a risk to the Bulk Electric System if not resolved.
3. Develop suggested resolution of the issue.
4. Present suggested resolution to the CCC for review and endorsement.

When requested, the AWG will coordinate the collection of CCC and Stakeholder input in the development and evaluation of tools used for alignment of ERO Programs.

Membership

The CCC Chair and NERC will annually¹ appoint the members of the AWG responsible for carrying out the scope of work. Membership in the AWG is primarily determined by subject matter expertise related to CMEP and ORCP processes.

1. Composition
 - a. CCC Appointed Members - Five (5)
 - b. CCC Chair
 - c. CCC Vice Chair
 - d. NERC – Two (2)
2. Leadership
 - a. AWG leadership consists of two Co-Chairs, one Co-Chair from the CCC² and one Co-Chair from NERC.
3. Observers
 - a. The AWG Co-Chairs may invite observers to participate in meetings, which may include additional NERC or Regional Entity staff, as well as other CCC members (e.g., CCC subcommittee representatives). Observer participation is limited to observing the process and providing additional information, when requested, and participation will not be part of the deliberation process.

Meetings

The AWG shall meet based on workload, as determined by the Co-Chairs, but will meet at least quarterly by conference call or in person. Meetings may also occur in conjunction with the regular CCC meetings. The AWG shall meet in closed session given the sensitive nature of the materials discussed.

Voting

The AWG recommendations will be consensus-based. If consensus cannot be reached, the AWG will provide a recommendation to the CCC with a brief explanation of the majority and dissenting position(s) for final determination by the CCC.

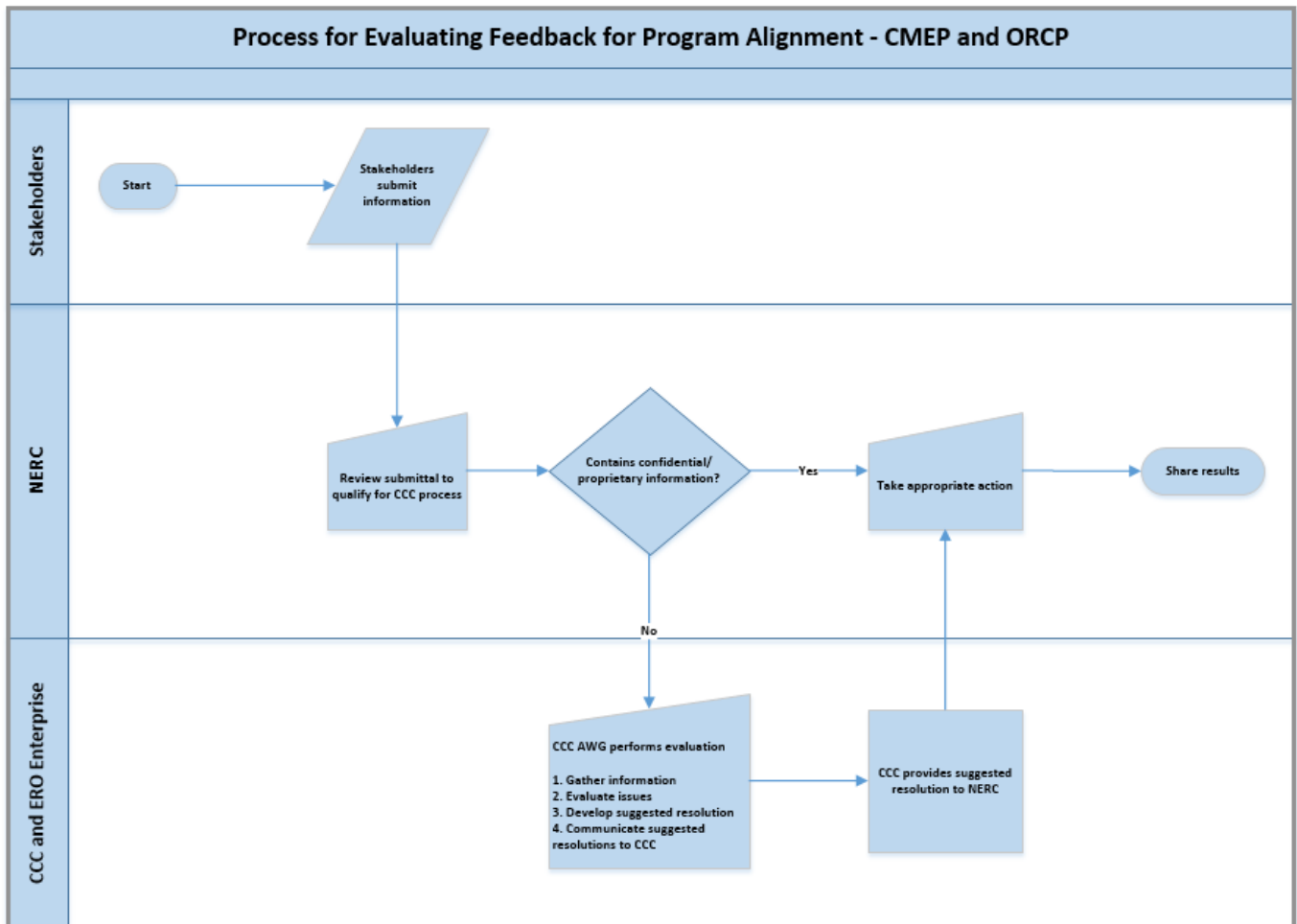
Deliverables

The AWG is responsible for communicating suggested resolutions of alignment issues to the CCC, who will then communicate recommendations to NERC. The AWG Co-Chairs will provide a quarterly report of activities to the CCC at its regularly scheduled meeting.

¹ CCC Chair will appoint CCC AWG members at the 2nd Quarter CCC meeting.

² CCC Co-Chair of the AWG will be chosen from the CCC Appointed Members.

Attachment 1: Process Flow for Evaluating Feedback for Program Alignment for CMEP and ORCP



Change History	
Date	Comments
10/18/2018	Posted
06/11/2018	Updated scope approved
09/14/2017	Approved
10/25/2017	Posted